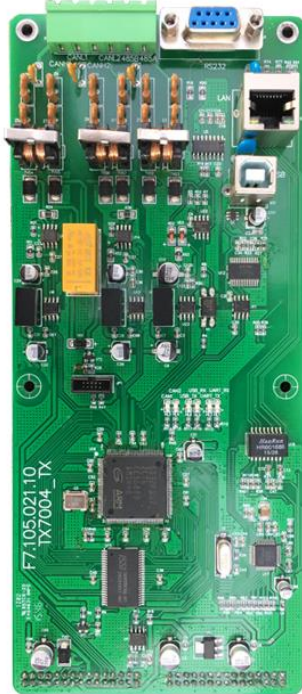


# NC7004

## Network Communication Card



### Features and Benefits

- Multiple communication protocol in one card.
- Support USB, Ethernet, Can bus and Serial ports.
- Optional Card to be added on the panel as required
- Compatible with TX7004 control panel
- Transmission path is fully monitored
- No Card positioning and addressing required
- Plug-in terminals, field wiring terminals are removable
- Easy to install

### Overview

The NC7004 is multiple communication protocols such a USB, Ethernet, Can Bus, RS485/RS232 on a single card intended to use in TX7 series control and indicating equipment. These four protocols synchronously working separately, the USB port is used for programing the control panel by uploading the data base form the laptop and for interfacing the Graphic Monitor Center (TX7812) server and client machine, while the CAN Bus signal is for the networking that can support up to 512 control panel in one ring. The ethernet port is used for email notification or for an IP networking if required. The RS485/RS232 is use for interfacing third party system such as building management system.

The NC7004 support the pathway requirement on the use of non-life safety networks and Ethernet when interconnecting life safety networking. The transmission path of the Can bus is fully monitored such as in the case of a short or open circuit fault and fault is reported to the control panel. The NC7004 card is panel mount type that can be installed in any available loop port or communication port, the control panel will automatically assign the loop number when powered-on.



## Technical Specification

### Protocol

USB

Ethernet

CanBus

Serial

### Power Rating Cable

### Operating Environment

Temperature

Relative Humidity

Interface for TX7810 Programming software and TX7812 GMC  
 Optional TCP/IP Network or Email notification feature  
 Network interface that monitor and control up to 512 control panels  
 RS 232/485 for other third-party system (Optional Modbus RTU)  
 USB: 15meters USB cable  
 Can Bus: 3Km Max at 2 x 1.50 mm<sup>2</sup> solid core fire resistance  
 RS232 Serial: 15 meters  
 RS485 Serial: 1000 meters

-10°C~+55°C

≤95%, non-condensing

## Ordering Information

<b>NC7004</b>	Communication Card for Class A CAN Bus networkable, and RS485/RS232/USB/Ethernet port.
<b>NC7004-Modbus</b>	Communication Card for Class A CAN Bus networkable, and RS485/RS232/USB/Ethernet port. Support Modbus RTU signal output.
<b>NC7004-IP</b>	Communication Card for Class A CAN Bus networkable, and RS485/RS232/USB/Ethernet port. Support TCP/IP Networking

