



EML-100/200/300/400

Monitor and Control Panel

Overview

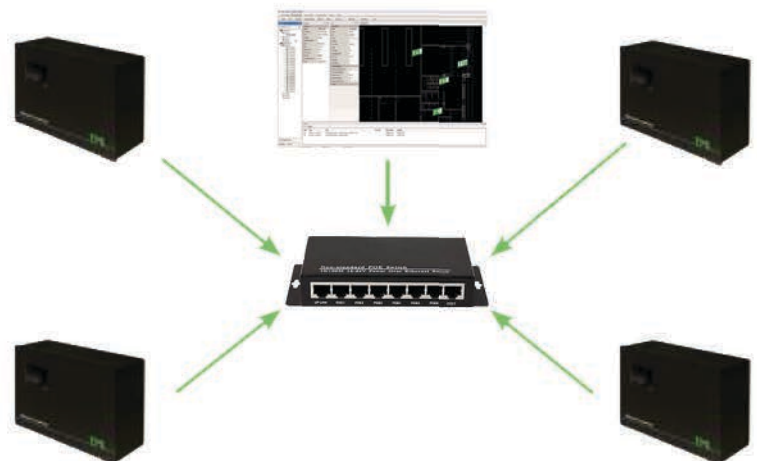
The main unit (control panel) directly, or through a subcenter controls and supervises the operation of the luminaires in the system. Checks the presence of the working voltage in the split circuit of the building with the help of the control modules. If necessary, switches the lighting units to emergence mode. It works from AC and DC as well.

Features and Benefits

- Automatic control
- 3.2" touch monitor
- Status and event display on the touchscreen
- Monitoring fast and easy
- Offer long-term cost advantages
- High quality and Easy to install
- Suitable in small and larger buildings as well

Network system of addressable luminaires with main battery

- All control panels can be programmed from one place
- The system's group settings can be seen clearly on the screen
- The networked panels can communicate with each other via UDP messages
- Quick commissioning
- Cable: Cat5e TCP/IP (max. 100m)

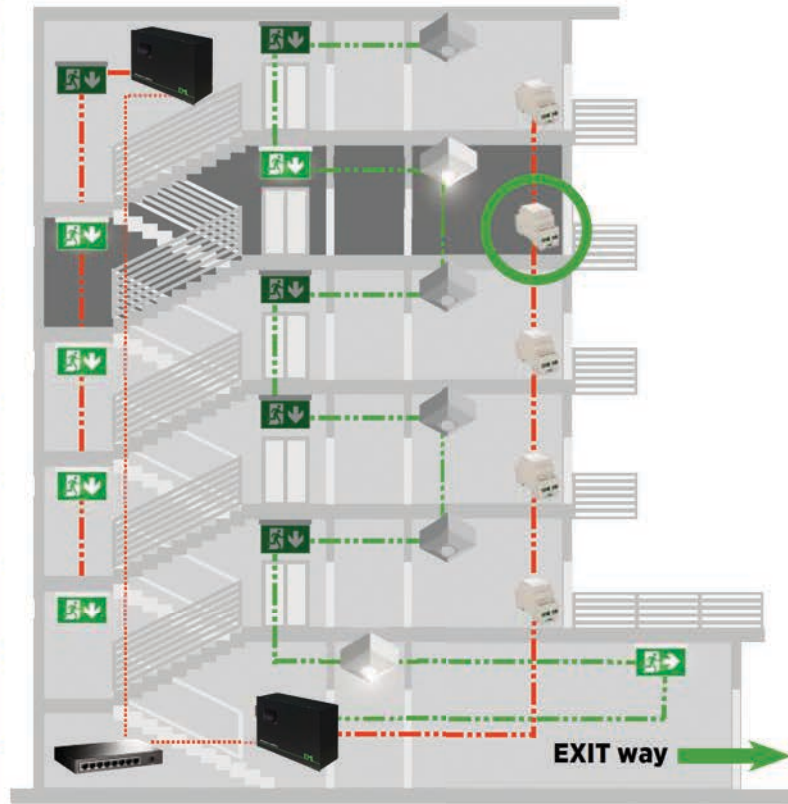


Technical Specification

Listed	CE
Model	EML-100, EML-200, EML-300, EML-400
Power Rating	
Voltage Range	120-240V AC-DC 50/60Hz, 650W/line (max. 4 lines)
Control Panel	
No, of Devices	up to 99/198/297/396 pcs of devices (99* devices per line)
Communication	AC Power line (ASM BUS), UDP, MODBUS
Network	TCP/IP
Luminaire control	The luminaires can be controlled individually or in groups
Store events	2000events/control panel
Gateway managment	254 panels per system
Software	Graphics software
Display	3.2" touch monitor / English / Hungarian
Output	4pcs. Relay contact
Dimensions	300x200x100 mm

Network system example, multiple group control

In case of short circuit the AC control send a signal to the Control Panel, the Control Panel turn on the appropriate lamps.



Schematic diagram

